



Pump Model - version

JET 82 M - N.2. - -

Company Name
Contact
Telephone
FAX
E-Mail address

Serial Number

Attention: check the correspondence with the serial number of the pump.

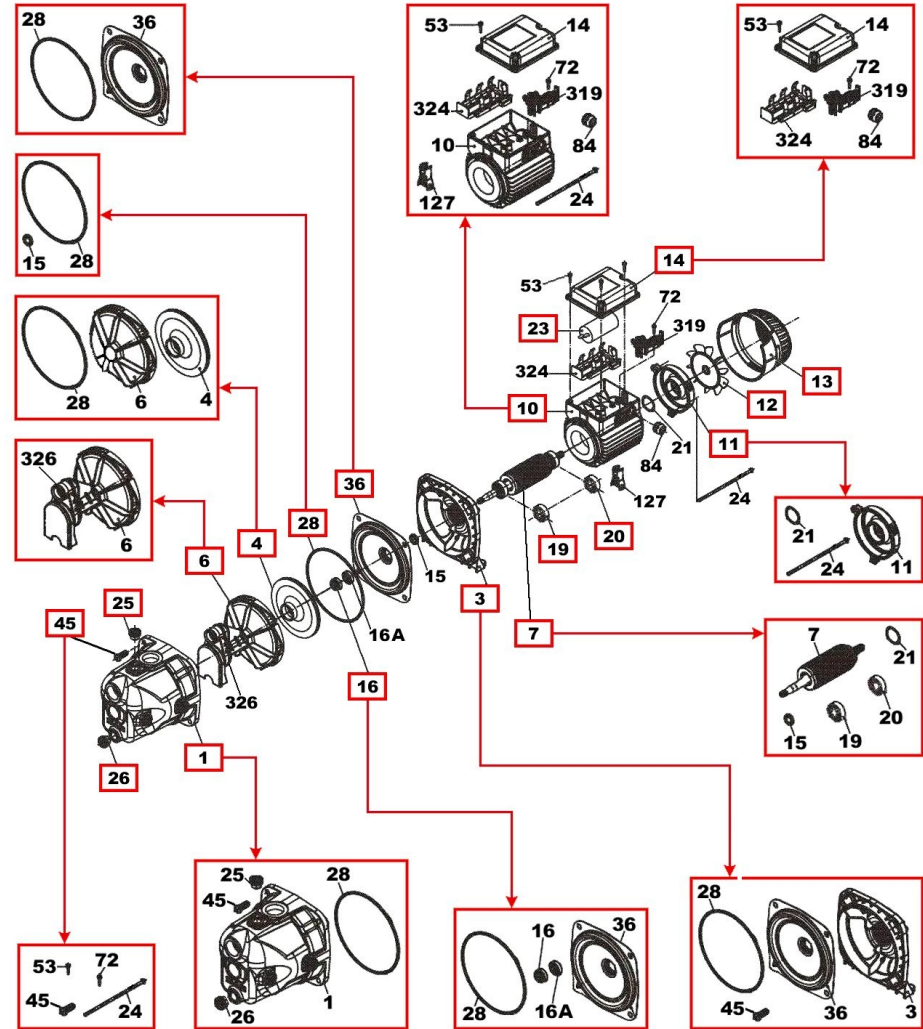
Receiver

From

JET 82 M - N.2. - - @ 102660020_d

JET 82 M @ 102660020

| Item | Quant | Item no. | Description | Unit pr. |
|------|-------|-----------|-----------------------|----------|
| 1 | 1 | R00004000 | PUMP BODY | On req. |
| 13 | 1 | R00004183 | FAN GUARD | On req. |
| 12 | 1 | R00004002 | FAN | On req. |
| 3 | 1 | R00004003 | SUPPORT | On req. |
| 7 | 1 | R00005186 | MOTOR SHAFT | On req. |
| 28 | 1 | R00004187 | OR | On req. |
| 45 | 1 | R00005185 | NUTS AND BOLTS | On req. |
| 19 | 1 | R00005129 | FRONT BEARING | On req. |
| 20 | 1 | R00005112 | REAR BEARING | On req. |
| 23 | 1 | R00004009 | CAPACITOR | On req. |
| 4 | 1 | R00004010 | IMPELLER | On req. |
| 11 | 1 | R00004011 | MOTOR COVER | On req. |
| 10 | 1 | R00005131 | MOTOR | On req. |
| 6 | 1 | R00004028 | DIFFUSER ASSEMBLY | On req. |
| 16 | 1 | R00004547 | SEAL | On req. |
| 14 | 1 | R00004811 | TERMINAL BOARD | On req. |
| 36 | 1 | R00004016 | MECHANICAL SEAL COVER | On req. |
| 25 | 1 | R00004017 | LOAD PLUG | On req. |
| 26 | 1 | R00004018 | DISCHARGE PLUG | On req. |



Project

Project ID

Created by

Created on
2011-01-06

Last update